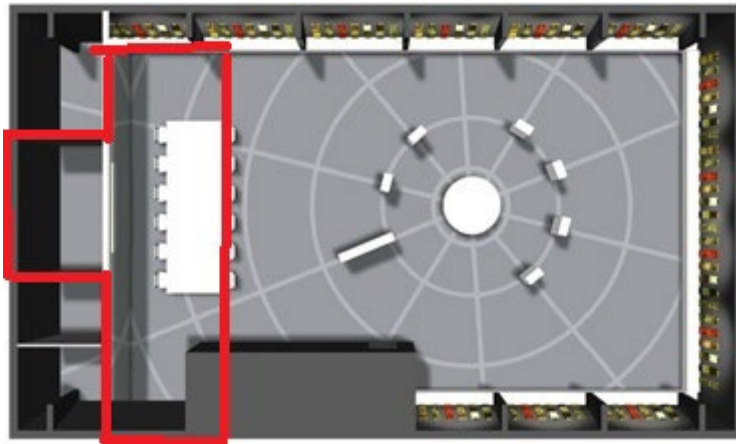
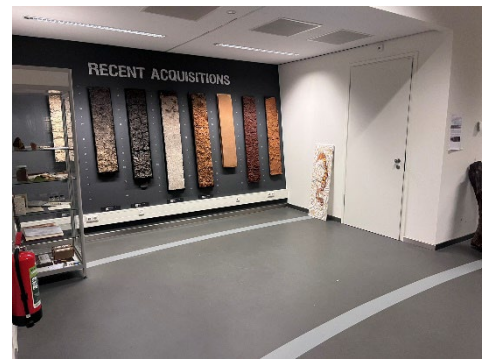


Space and layout of the World Soil Museum*

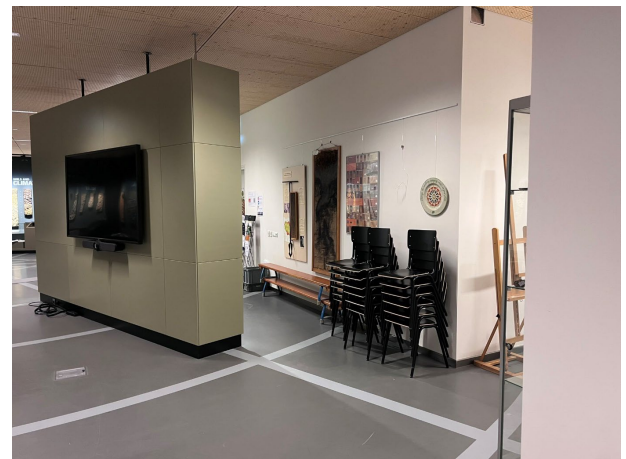
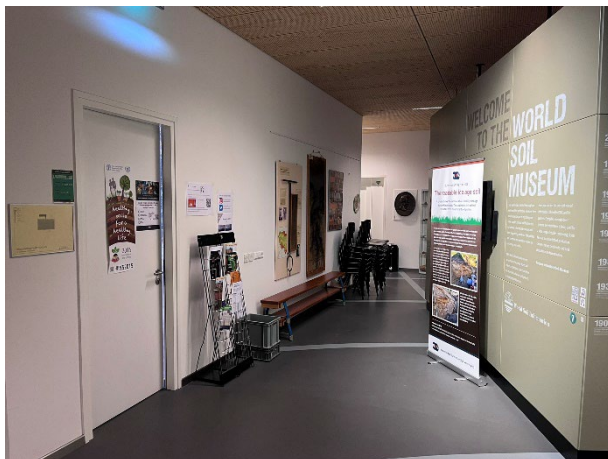
* The possibility of other/additional spaces will be explored

The total floor space of the museum is 250 m²





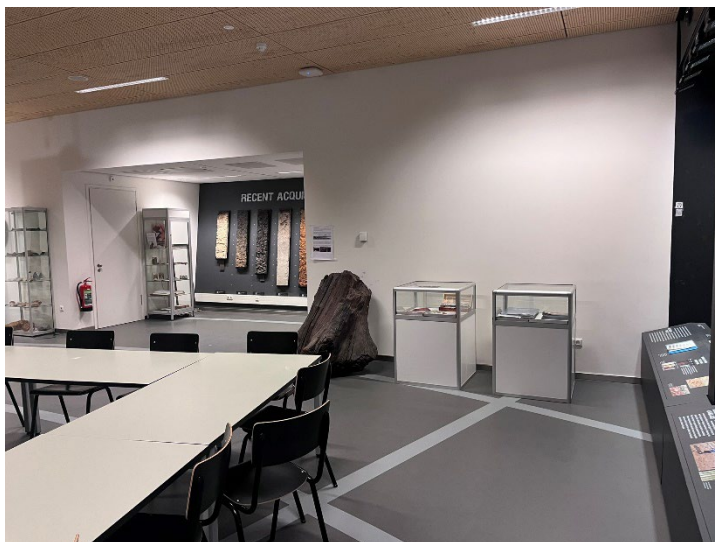
Alcove. Profiles will be removed. Glass cabinet can also be removed



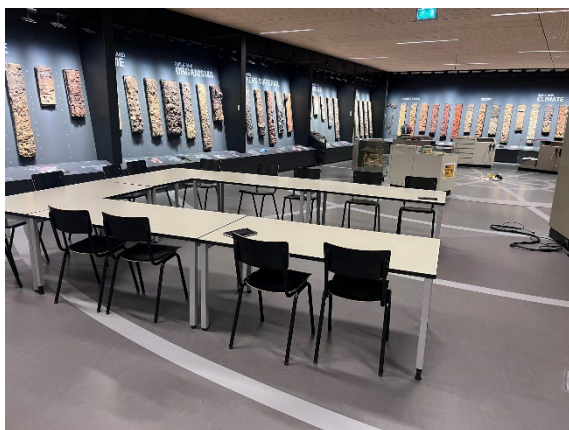
Space at the entry of the museum, in-between introduction wall and wall. Chairs and hanging items on the wall can be removed for the exposition



Lecture space in front of the alcove. The chairs and tables can be removed for the exposition



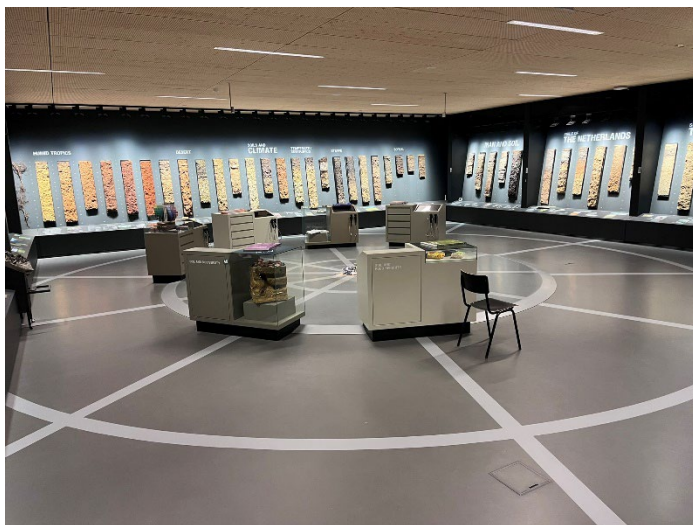
Lecture space in front of the alcove. Cabinets and tree trunk can be removed for the exposition
(there may be a installation in front of the wall, to be decided)



Lecture space with a view to the main area of the museum



Alcove near the elevator. Profiles cabinet and other movable objects can be removed for the exposition



Main space of the museum. Some elements can be integrated in this space. But moveability must be retained to receive and guide groups.



Example: public visiting the Earth Wipes exposition in the World Soil Museum of herman de vries