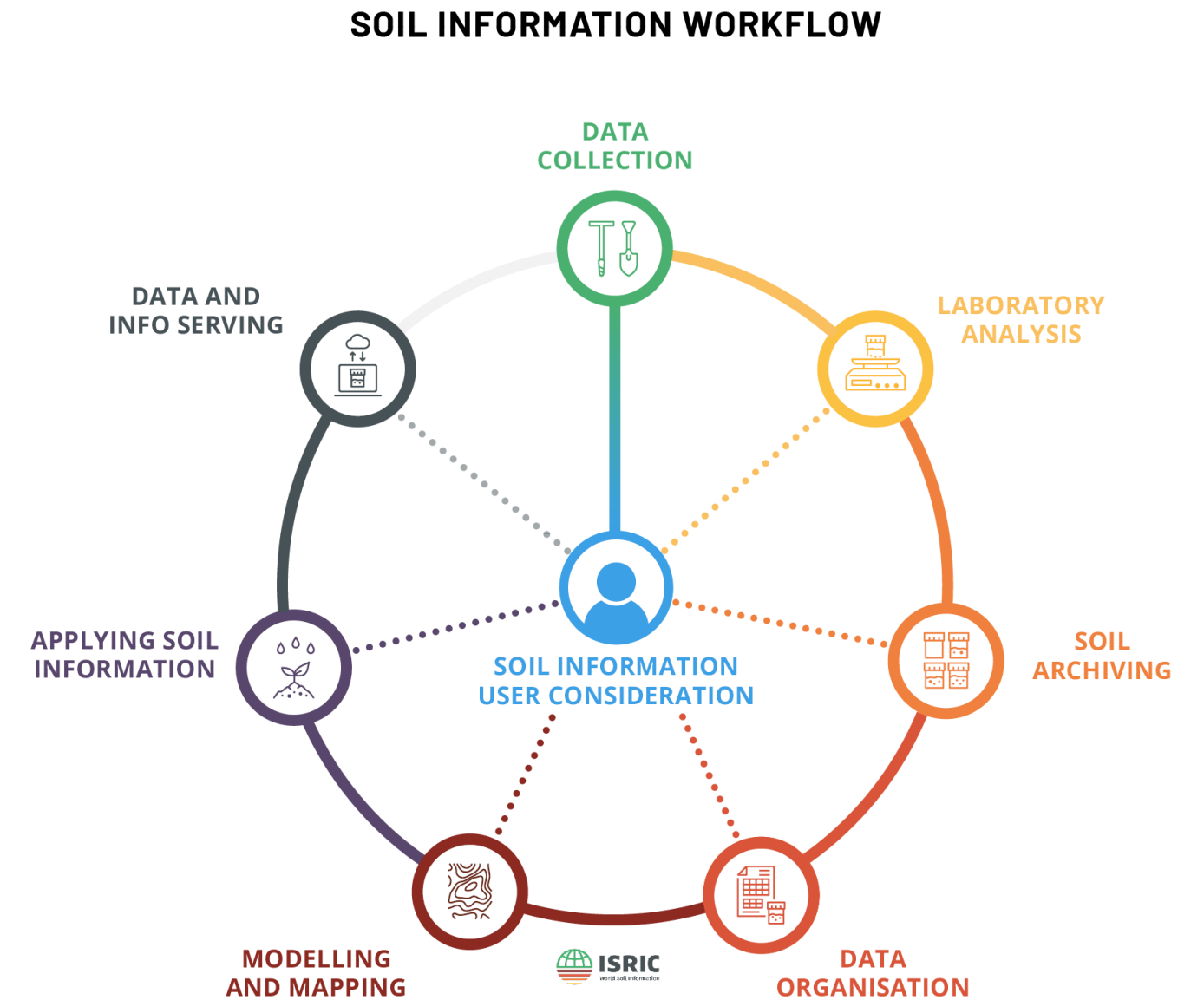


# SOIL INFORMATION WORKFLOW

GUIDELINES FOR THE USE OF THE SOIL  
INFORMATION WORKFLOW GRAPHICS

# INTRODUCTION

The soil information workflow developed by ISRIC-World Soil Information categorizes the steps to collect soil data and provide information products and services based on soil knowledge and auxiliary data across various domains to help users in setting up soil information system on a national level.



# USE OF THE SOIL INFORMATION WORKFLOW GRAPHICS

Entities other than ISRIC-World Soil Information are allowed to use the Soil Information Workflow graphics as long as they adhere to the requirements highlighted in this document.

The Soil Information Workflow graphics are available for informational purposes. It is not necessary to obtain permission from ISRIC before using them for this purpose. However, if the graphics are being used for any other reason, contacting ISRIC to obtain permission is required.

Please use one of the following image captions on all online/printed materials:

- Image source [ISRIC-World Soil Information](#)
- Soil Information Workflow by [ISRIC-World Soil Information](#)
- Soil Information Workflow - Image by [ISRIC-World Soil Information](#)

ISRIC is not responsible or liable for the actions of other entities, including the commercial use or fundraising of Soil Information Workflow graphics.

The use of Soil Information Workflow graphics by other entities does not imply ISRIC endorsement.

The Soil Information Workflow graphics should not be reproduced for the purpose of self-promotion or for obtaining any personal financial gain.

ISRIC will not be responsible for any errors in the translation of the Soil Information Workflow graphics into languages other than English.

# GRAPHICS VARIATIONS

SOIL INFORMATION WORKFLOW



SOIL INFORMATION WORKFLOW

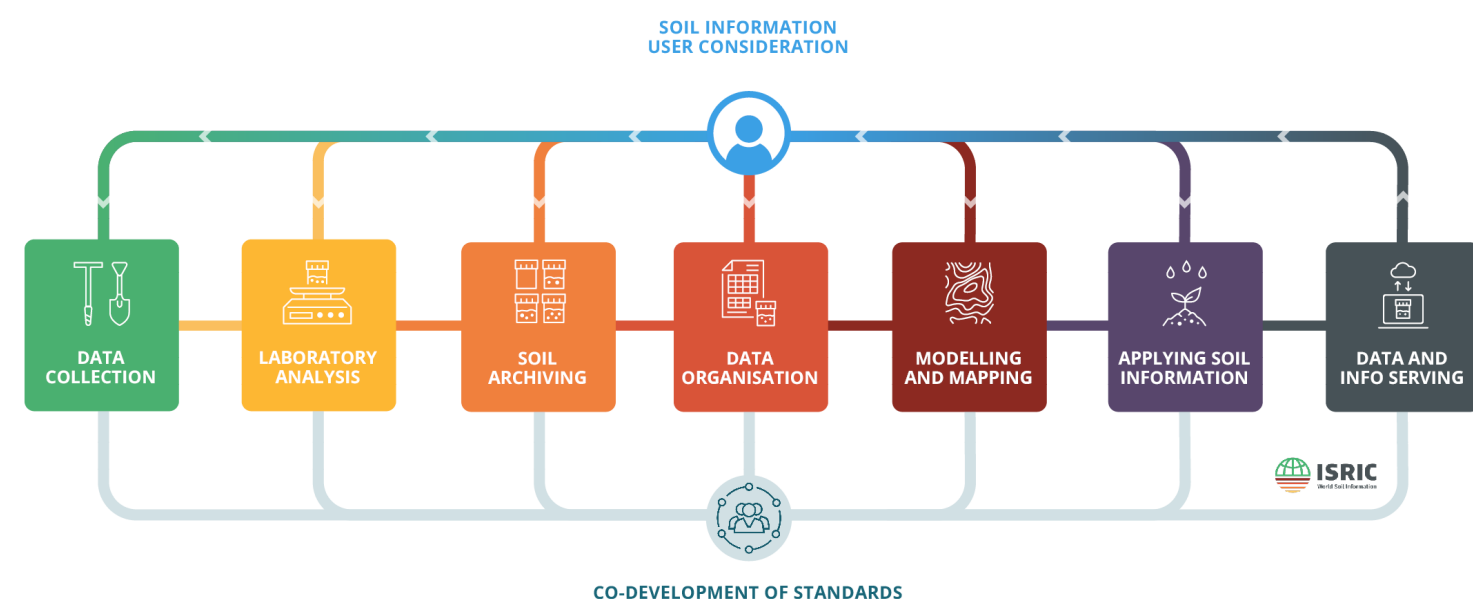


These graphics are ONLY to be used on a white background, ensuring the ISRIC logo is visible.

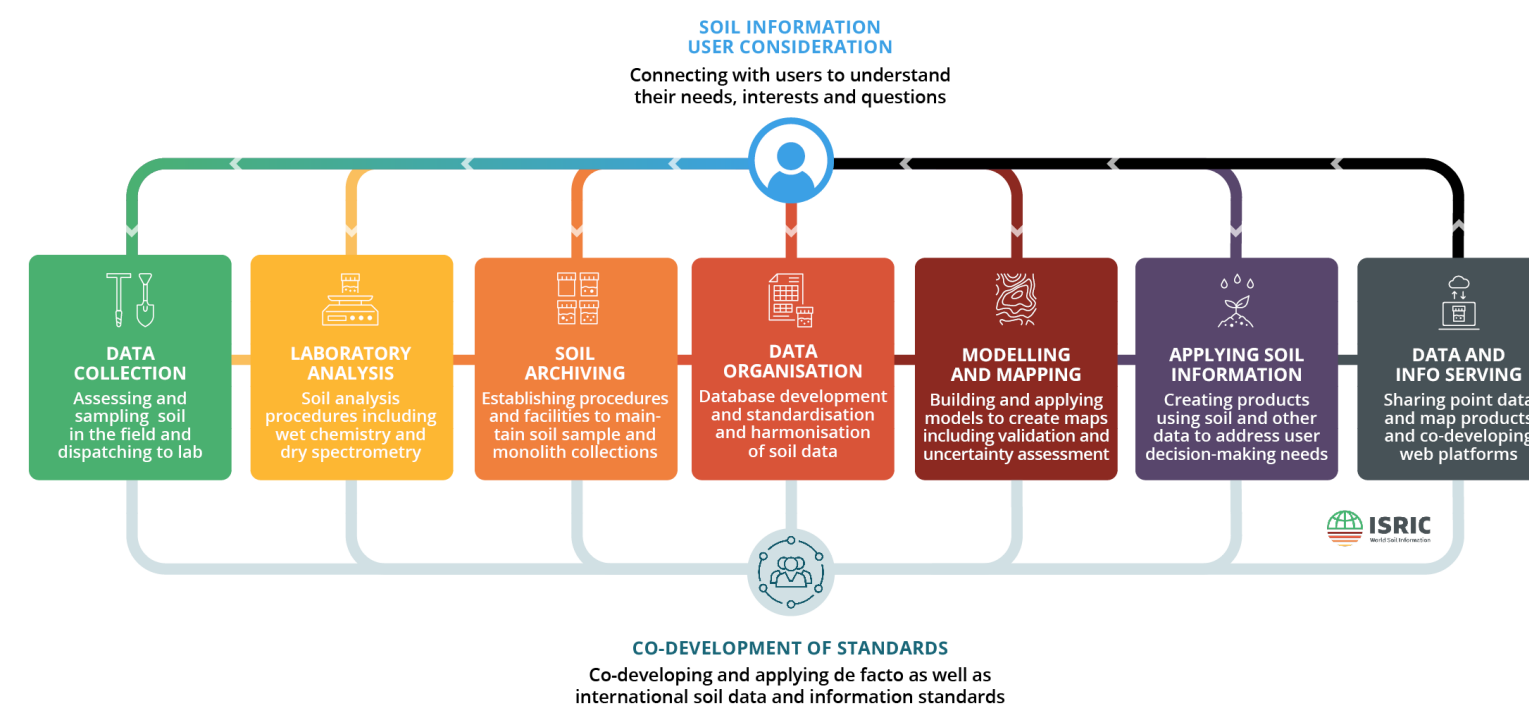
DO NOT: stretch/distort, rearrange elements, add drop shadows, change colors, alter the typeface.

# GRAPHICS VARIATIONS

SOIL INFORMATION WORKFLOW



SOIL INFORMATION WORKFLOW



These graphics are ONLY to be used on a white background, ensuring the ISRIC logo is visible.

DO NOT: stretch/distort, rearrange elements, add drop shadows, change colors, alter the typeface.

# COLORS

Hex Code  
#4ab070

CMYK  
70% 1% 70% 0%

RGB  
74-176-112

Hex Code  
#fdb733

CMYK  
0% 33% 84% 0%

RGB  
253-183-51

Hex Code  
#f0803d

CMYK  
0% 60% 79% 0%

RGB  
240-128-61

Hex Code  
#d95438

CMYK  
10% 77% 80% 1%

RGB  
217-84-56

Hex Code  
#8c2921

CMYK  
28% 92% 86% 32%

RGB  
140-41-33

Hex Code  
#58466c

CMYK  
73% 75% 32% 19%

RGB  
88-70-108

Hex Code  
#475257

CMYK  
69% 52% 47% 42%

RGB  
71-82-87

Hex Code  
#3ba0e5

CMYK  
70% 24% 0% 0%

RGB  
59-160-229

Hex Code  
#196678

CMYK  
85% 41% 38% 23%

RGB  
25-102-120

Hex Code  
#000000

CMYK  
91% 79% 62% 97%

RGB  
0-0-0

Hex Code  
#ffffff

CMYK  
0% 0% 0% 0%

RGB  
255-255-255

Ensure that the gradient direction and color transition align with the graphics.

# TYPOGRAPHY

Aa

Open Sans Semibold

Open Sans Bold

Aa Bb Cc Dd Ee Ff Gg  
Hh Ii Jj Kk Ll Mm Nn Oo  
Pp Qq Rr Ss Tt Uu Vv  
Ww Xx Yy Zz  
1 2 3 4 5 6 7 8 9 0